

LIGHTWAVE UPDATES

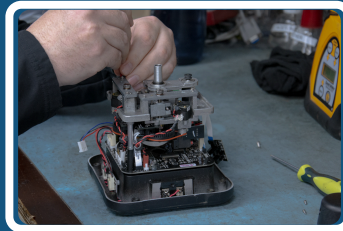


JUNE INSIGHTS

JUNE | 2025

DID YOU KNOW ABOUT OUR EQUIPMENT SERVICES?

With decades of expertise and cutting-edge equipment, Lightwave Technology provides reliable, high-precision calibration and servicing from our Bayswater North facility.



What We Offer:

- Laser levels
- Dumpy/optical levels
- Theodolites & total stations
- GPS & machine control systems
- Precision metrology support for
 - Kreon Portable Arms (AACMMs)
 - 3D Scanners (Scantech)
 - API Laser Trackers

Our **in-house** calibration lab and service centre ensure:



Factory-grade accuracy



Fast turnaround time



Expert factory-trained engineers



Trusted suppliers, hassle-free repairs

[Explore More >>](#)



WHY SETTLE FOR UNEVEN SURFACES?

At Lightwave Technology, we offer professional levelling services tailored for a wide range of projects — from tennis courts and sports fields to factory slabs and landscaping work.

Our Mini Drag Scrapers are designed for flexibility and precision, easily towed behind small tractors or PTO pumps to spread materials like cement-based rock, sand, earth, and gravel with accuracy.

With reliable equipment and an experienced team, we ensure consistent, high-quality levelling that meets your requirements and delivers a flawless finish.



Tennis Courts



Factory Slabs



Landscape Construction



Sport Field

HOW INDUSTRIES ARE USING OUR SOLUTIONS ?

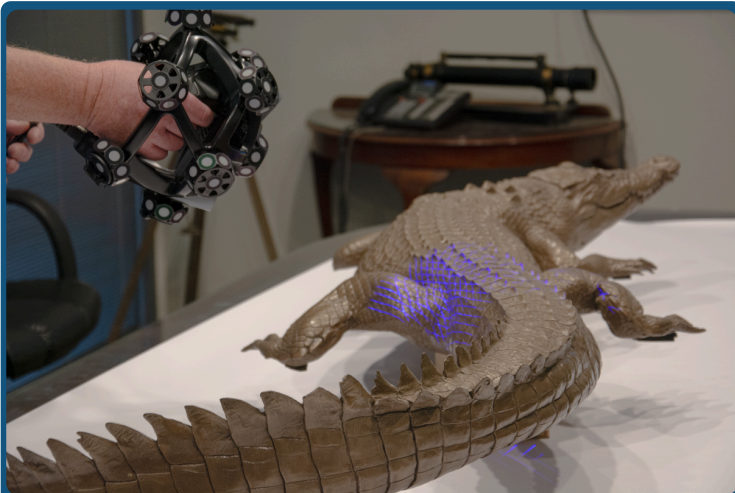
Scanning the Crocodile : Inside RRET's Laser-Tracking Journey in Digital Manufacturing

From its beginnings in the restoration of aircraft components over 12 years ago, Restoration and Reverse Engineering Technologies (RRET) has been providing a wide range of Digital manufacturing techniques, including 3D scanning, CAD conversion, 3D printing, and CNC routing, to clients in aviation, engineering, and the arts sectors. Most recently, RRET has been working with Billmans Foundry of Castlemaine to enhance the foundry pattern-making process through digital manufacturing for various engineering and art-based projects.

When Brett brought in his client's crocodile casting, it was an ideal subject for a laser tracking demo. Using the Scentech NimbleTrack-C laser tracker — which requires neither stickers nor reflective targets — we can easily scan the entire model, including the tail crest area, which features complex textures and tight angles. The crocodile, made of fiberglass, was scanned successfully. The scan data will support scaling the model up by 1.5× for several digital manufacturing projects commissioned by Natural History Productions. This is a great example of applying our technology to handle detailed, sculptural shapes in real-world scenarios.

RRET

Restoration Reverse Engineering Technologies



How the **Kreon Arm** Transformed Quality Control for Stahl Lasertechnik

Stahl Lasertechnik GmbH, a leading German manufacturer of precision sheet metal components, recently faced challenges such as detecting subtle deformation in large metal assemblies and meeting strict dimensional tolerances. Stahl Lasertechnik needed a highly accurate and flexible system to handle real-world shop-floor conditions.

By integrating the Kreon Ace+ 3.5m measuring arm, the Skyline Eyes 3D scanner and PolyWorks inspection software, the company now performs both contact (probing) and non-contact (3D scanning) measurements with ease, capturing high-precision data across a wide range of components



STAY UPDATED WITH US ON SOCIAL MEDIA!

Want to be the first to know about exclusive product launches, behind-the-scenes content, giveaways and more?

Follow us on Instagram and Facebook, its the easiest way to stay in the loop and be part of our growing community.

